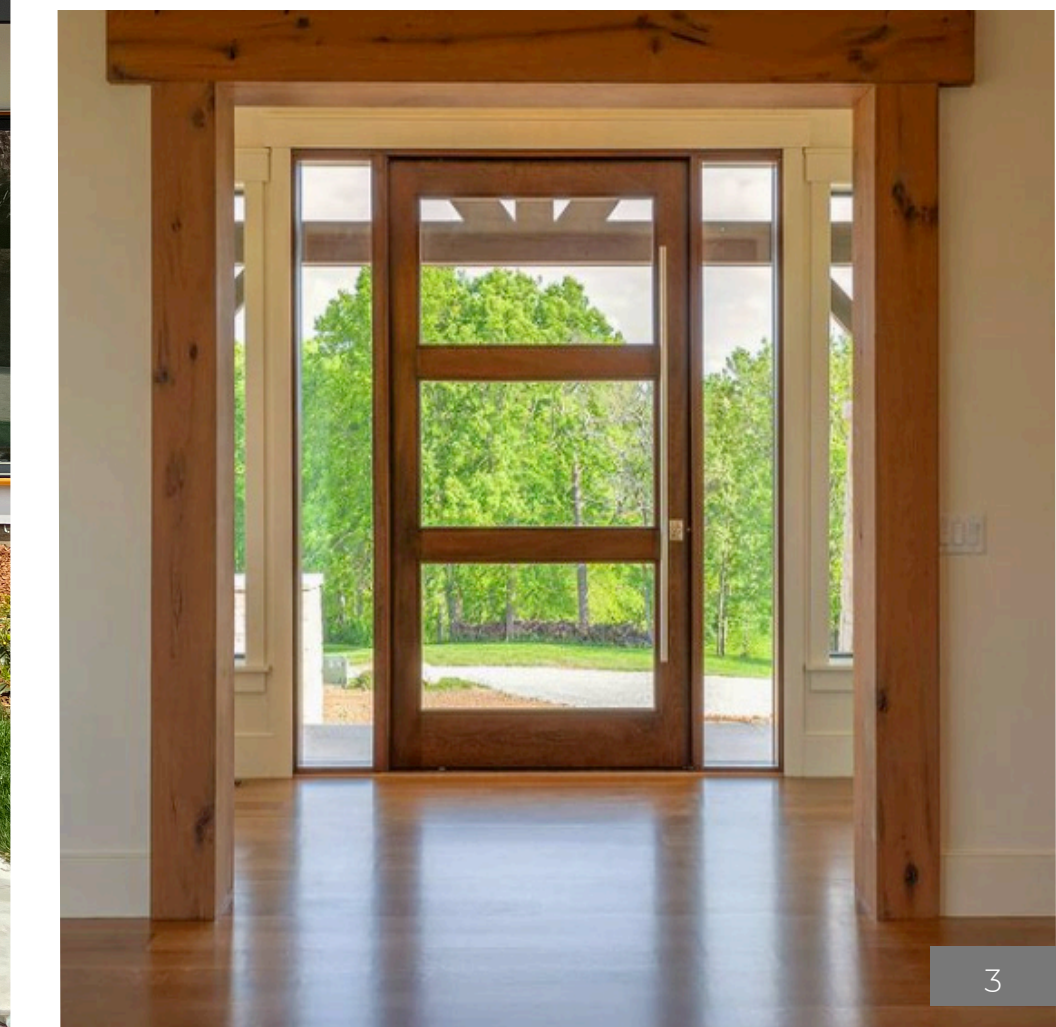


PIVOT

DOOR COMPANY



270





Strength of Steel & The Beauty of Wood

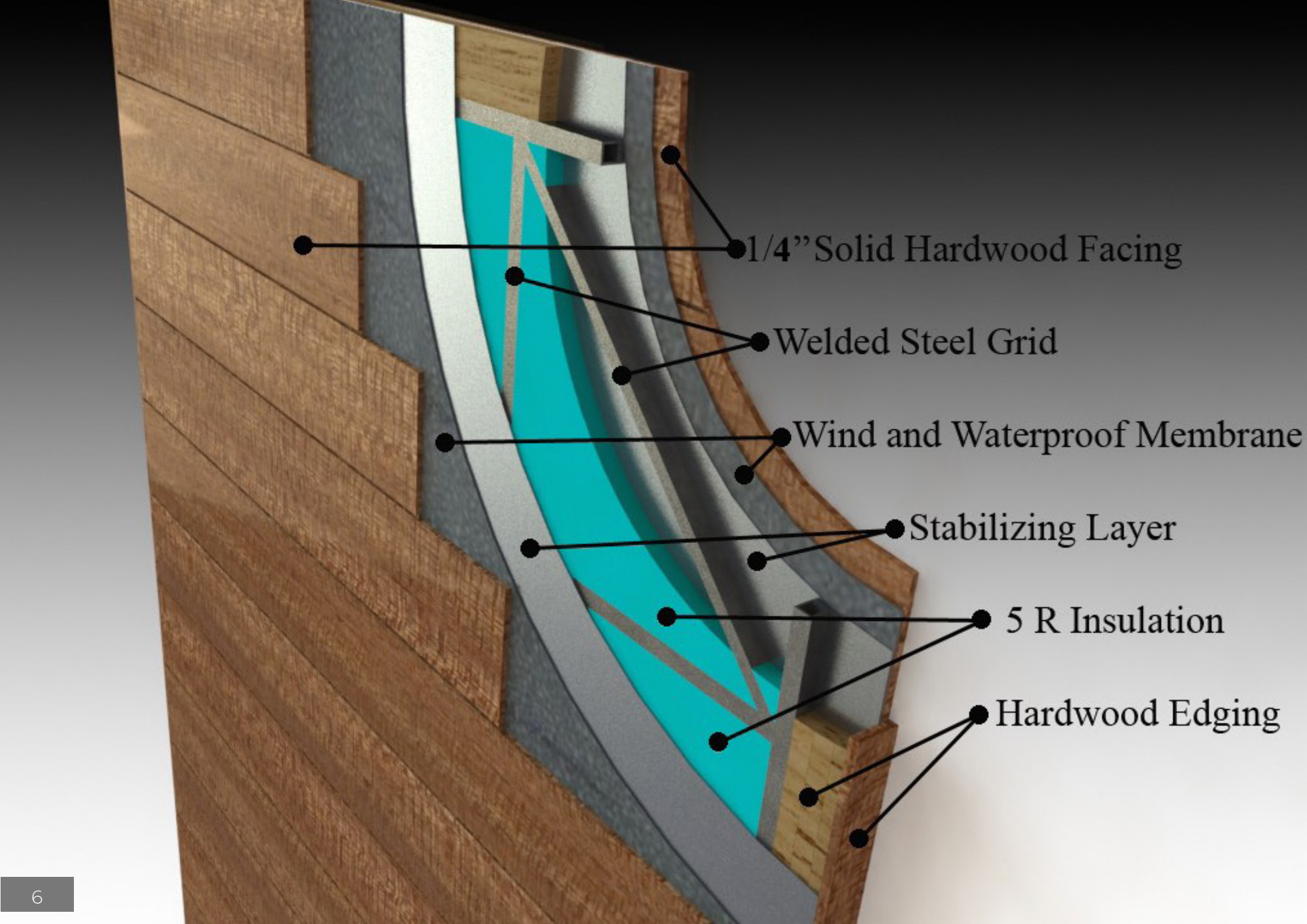


Table of Contents

• Why Buy From Us	07
• Warranty and Production	09
• Popular Products	
• Lassen	10
• Solace	11
• Kogan	12
• Ogden	13
• Katti & Line	14
• Mehta	15
• Glass	16
• Custom	17
• Hannah & Sydney	18
• Paint Grade	19
• Buying Guide	21
• Wood and Glass Options	22
• Hardware	23
• Key Measurements	24
• Pivot Placement	26
• Crating & Shipping	27

*Each table of contents line items above are links to the corresponding page in this document.

*Page titles and product names throughout this catalogue are links to the corresponding product page or information on our website.



Why Buy From Us ?

Solid Wood Facing

Each door we build comes standard with a solid wood face, offering the grounded beauty of traditional materials. Using specialized technologies, we apply a face that lasts and won't delaminate.

Rigid Steel Core

At the same time, each exterior door is made with a steel core to offer durability and strength against warping. Our steel core is the key to the door's guaranteed performance.

A Superior Pivot Door

Without question, Pivot Door Company offers a product like no other available on the market. We make pivot doors every day of the week. No one else has the same experience and attention to pivot door production as we do.

Precision Woodwork

We pride ourselves on our reputation as woodworkers. When it comes down to trim-work and face construction, we stand on decades of experience. Each door is trimmed by hand with precision and symmetry. Whether we are executing straight lines, pockets, grooves, biscuits, or rabbets, we demand a flawless product.

Custom Made-to-Order

Each door is handcrafted by artisan woodworkers built to your specifications, we take time and attention in determining correct proportions and construction for each new project. When it comes to building the door you want, we offer you an abundance of options to help you get the door that fits your vision. We take pride in building doors from standard to extremely wide or tall with a warranty, rarely seen in this industry.

A Door Without Borders

Beautiful homes know no geographic limitations and neither do our doors. All our doors have a continuous seal on all four sides. You'll find our doors in homes spread across the world. Our method to keep our doors weathertight has been proven in all climates. Our doors have been successful in Miami-Dade Florida, Nova Scotia, Hawaii, Arizona and hundreds of other cities.



Warranty & Production

We stand behind our product

You want an amazing entryway; we want to build you an amazing entryway. We are passionate about making a great product that goes beyond our customer's expectations. We want you to say, "Wow."

Warranty terms

We believe in our products and stand behind each door we ship out. We offer a two year limited warranty for our doors, covering all manufacturer defects. This warranty applies to doors properly sealed and finished per our Care and Finishing guide, which explains what you need to do to keep your door a beautiful, functioning part of your home for years to come.

We get it done, quickly

We offer lead times shorter than the industry standard. No one makes a semi-custom pivot door as quickly as we do: our standard lead time is six weeks from order confirmation, sometimes even less. And if that's not soon enough, in some cases, we can get you a custom door in a month or less if you ask for expedited production.

Our manufacturing shop and office are in Colorado Springs, Colorado. Our products are proudly made in the USA.

A door that holds up over time

A pivot door built right will last the life of a home. Our wood facing, stabilizing layers, and steel grid have been calibrated to resist warping better than any other wood pivot door out there.

[Click here to learn more about our warranty](#)



Lassen



This style has 2" tall horizontal glass roughly 12" apart.



Solace



This style is made of roughly 12" planks with 1/8" square grooves.



Kogan

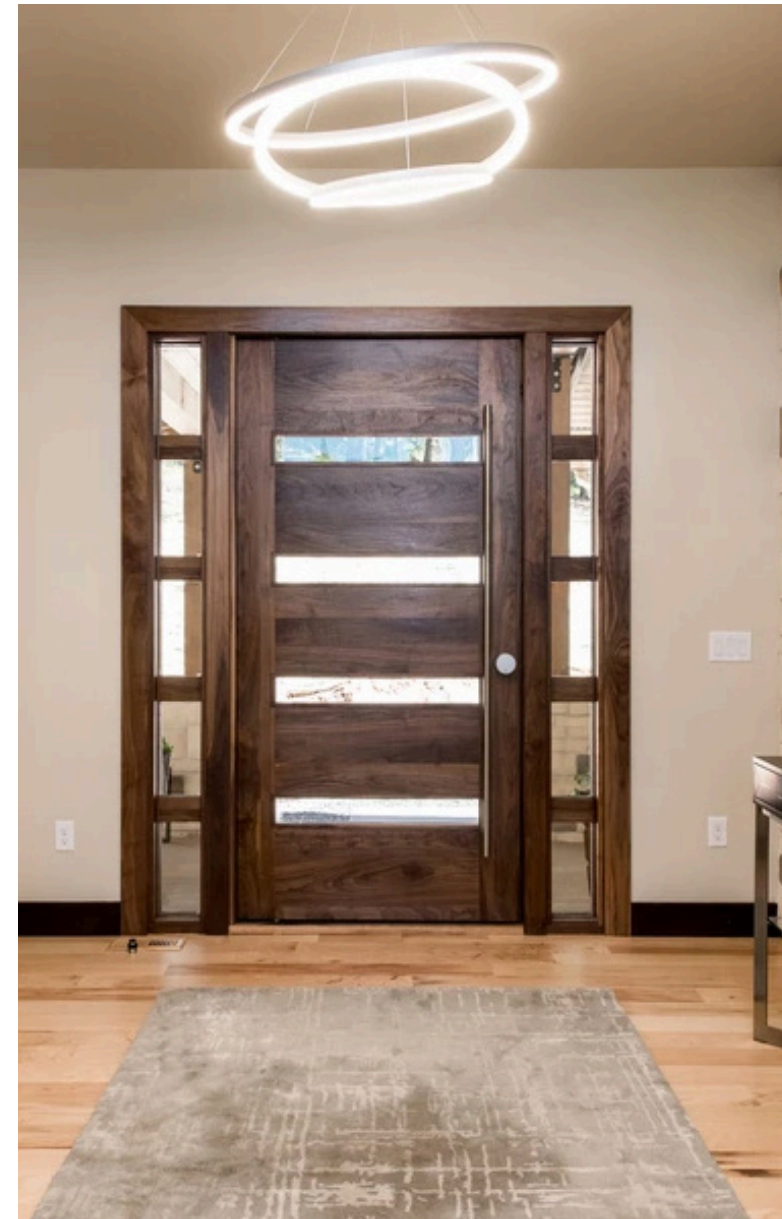


The Kogan door is made with 3 glass openings and large solid sections forming a smooth flat face, including a rectangle hardware section. The face is made of steel or 1/4" solid wood of your choice. There are approx. 14" horizontal rails at the top and bottom and approx. 8" vertical stiles on the left and right.

All the trim in the design is raised to create a unique and modern feel.

This design is a great choice if you want custom hardware or special glass accents on your door.

Ogden

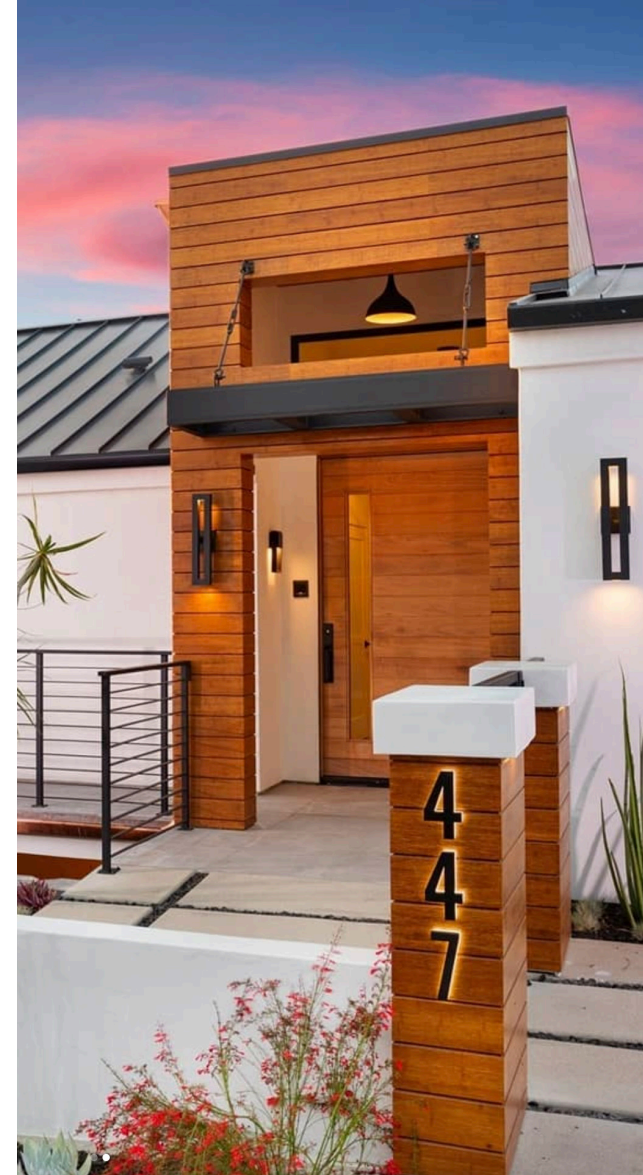


This style has 4" tall horizontal windows roughly 18" apart. Complete the look with Ogden sidelights.

Ogden sidelights are separate units with matching 4" dividers.

Katti & Line

Katti style is made of 6" tall horizontal planks with 1/8" square grooves and a vertical window generally 6" wide.



The Line door is the Katti but with 12" tall horizontal planks. Customize your door with the window placement on the pivot or handle side.



Mehta

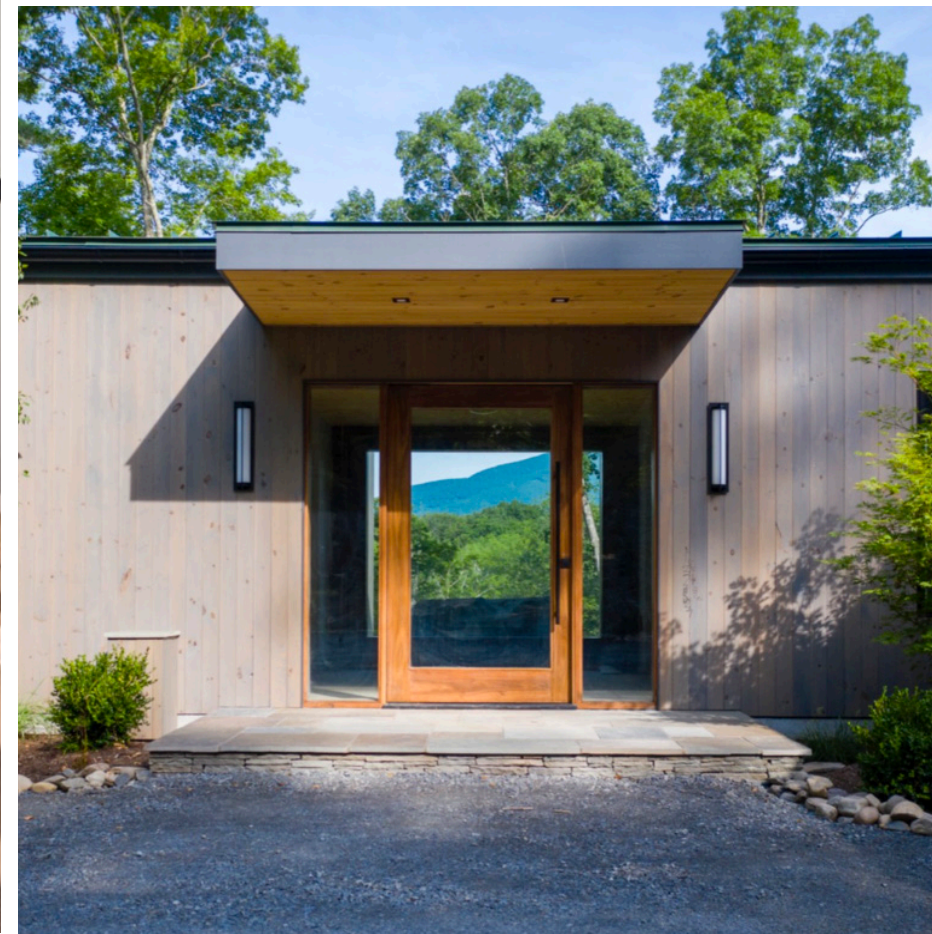
The Mehta door is made with hardwood veneer running vertically to form a smooth flat face and a steel powder coated vertical pull handle 10" or 12" wide depending on door size. This 3 1/2" thick door is a great choice if you want a steel accent on your wood door, creating an individual look.





Glass

This design is one glass piece with 6 1/2" stiles and top rail with the bottom rail 10" tall. While all designs are customizable, the glass style is the most commonly customized to have matching stiles and rails.



Custom

Every door we make is custom-built, allowing for endless possibilities in design. If our standard designs are not what you're looking for, work with our design team to customize your door!



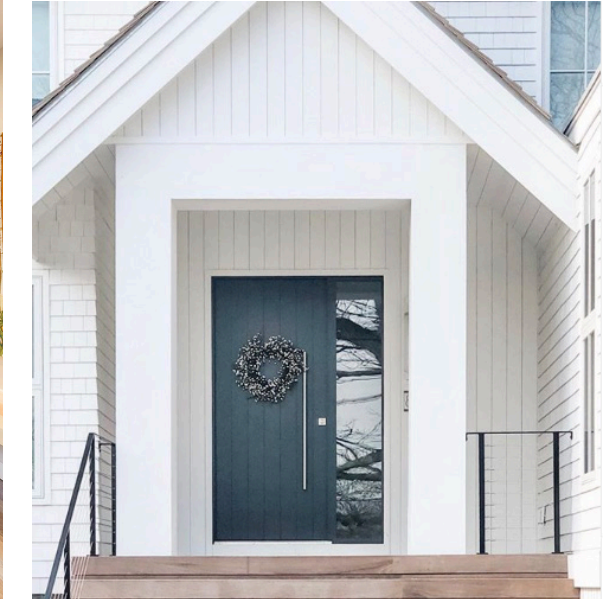


Sydney & Hannah

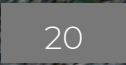
The Hannah style is equal parts glass and horizontal wood planks. The Sydney style has approximately 5-6 horizontal 12" glass pieces. These are great designs to allow a lot of light inside.



Paint Grade



Any style is offered in a Paint Grade Mahogany wood type. This option offers flexibility to finish the door and jamb to match the project. We recommend paint grade when designers want to mimic an aluminum jamb. A paint grade door unit makes installation, cost, and maintenance a more economic option.



Online Ordering

What's Included

Shipping

21

Wood & Glass Option

Wood options



Mahogany

African Mahogany (Sapele) is a reddish-brown hardwood wood and is desired for its rarity, strength, and beauty. It is one of our most durable, and resists swelling and warping, making it ideal for harsher environments and coastal climates. With its stability and smooth surface, Sapele is also used as our Paint Grade wood selection.



Walnut

American Black Walnut hardwood is naturally darker in color, much like an espresso brown. It is strong, hard, and exceptionally durable, without being excessively heavy. When sealed there is a dark contrast from the heartwood and sapwood offering an exotic finish. Although Walnut is naturally dark it has the propensity to lighten over time.



White Oak

White Oak hardwood has a medium brown grain with an olive cast, while the sapwood ranges from a light cream to tan. Its moisture movement is medium to high and it has a good density with a medium to coarse texture. White Oak is more resistant to weathering issues than Red Oak.



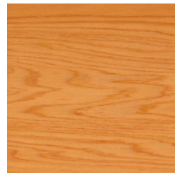
Knotty Alder

Alder is a light brown with a yellow or reddish tinge. The wood is fairly straight grained with a uniform texture. Alder is a relatively soft hardwood of medium density that has low bending strength, shock resistance, and stiffness. Clear Alder is an option if you want to capture the grain beauty without the rustic feel of open knots.



Red Oak

Red Oak hardwood has a pinkish tone and is compared to White Oak. It is a heavy wood and is not as durable as White Oak. Because of its hardness, it has a good density with a medium to a coarse texture in the grain.



Cherry

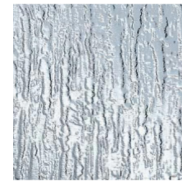
Cherry hardwood is a light to reddish-brown color which deepens with age and exposure to sunlight. Cherry will require a good sealer and proper maintenance. Cherry wood is a delicate wood and close-grained with high resistance to warping. It is often used in cabinetry and furniture-making.

The above wood types are our most common choices. With all our doors built custom, we can accomodate most other wood types. Other frequently requested wood types are Doug Fir and Cedar.

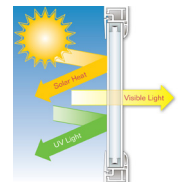
Glass options



Frosted (privacy glass)



Rain



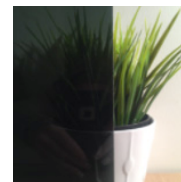
Low - E



Clear Glass

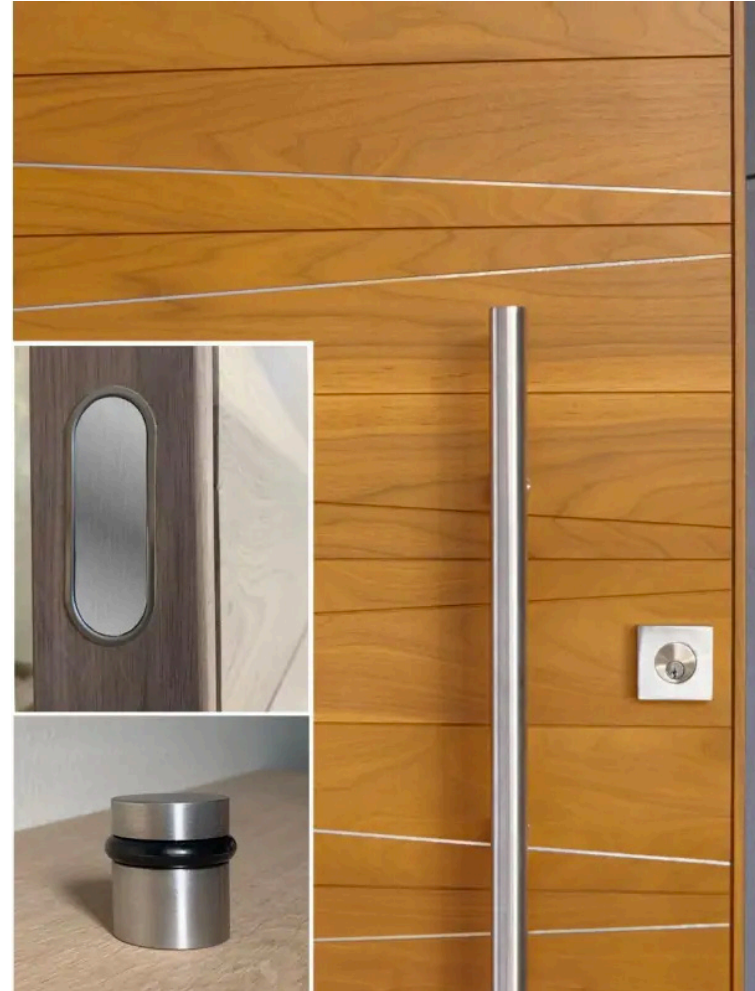


Reed

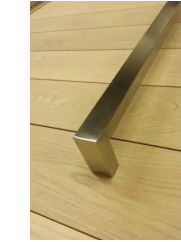


Tinted

Hardware



Handle and Lockset Packages include a pull bar, deadbolt, magnetic catches and door stop. Our other hardware options include Multipoint locks, Mortise deadbolts and custom steel fabricated handles.



Square Handle 7910

This square tubular pull offers a narrow profile and clean lines. Pulls are sold as a set (one handle for inside and one handle for outside). They come with all the necessary hardware to attach to 1/4" to 2-1/4" thick doors. Pulls are 1-1/2" in width. Available finishes include Stainless Steel and Flat Black.



Modern Bar 3301

This tubular round pull offers a narrow profile and clean lines. Pulls are sold as a set (one handle for inside and one handle for outside). They come with all the necessary hardware to attach to 1/4" to 2-1/4" thick doors. Pulls are 1-1/4" in diameter. Available finishes include Stainless Steel and Flat Black.



Smart Deadbolt

Emtek's Empowered™ motorized touchscreen smart keypad deadbolt works with the Yale access app. Create and manage unlimited entry codes without the need for a key! Comes with auto-unlock and DoorSense™ technology. Works with all three voice assistants and is compatible with the leading smart home security systems and hosting platforms. Fits our 2 1/4" doors with standard door prep. Available finishes are Satin Nickel, Flat Black.



Square Deadbolt

Emtek's Square deadbolt is a popular and modern look. It comes as a complete set, including the latch and strike plates. Fits all our doors with standard door prep. Available finishes are Brushed Stainless Steel, Satin Nickel, Flat Black and Oil Rubbed Bronze.



Modern Disc Deadbolt

Emtek's Modern Disc deadbolt has a flat face, creating a minimalistic look. It comes as a complete set, including the latch and strike plates. Fits our doors with standard door prep. Available finishes are Satin Nickel, Flat Black and Oil Rubbed Bronze.



Magnetic Catches

Our heavy duty magnetic catches are a modern and silent door catch option. This is a great option to accompany a deadbolt and long pull handle to hold the door shut while not locked. Magnetic catches are installed along the side of the door. Doors under 9ft tall will want to order two magnetic catches, one close to the top and one close to the bottom of the door. Available finishes are Stainless Steel and Flat Black.



Modern Door Stop

This brass door stop comes with a black DuraFlex bumper and your choice of Stainless Steel and Flat Black. It is floor mounted, we suggest installing it on or near the threshold close to the pivot to not be a tripping hazard. It is 1 1/2" diameter and 2" tall. With pivot doors being so easy to open, make sure to protect your walls with this door stop!



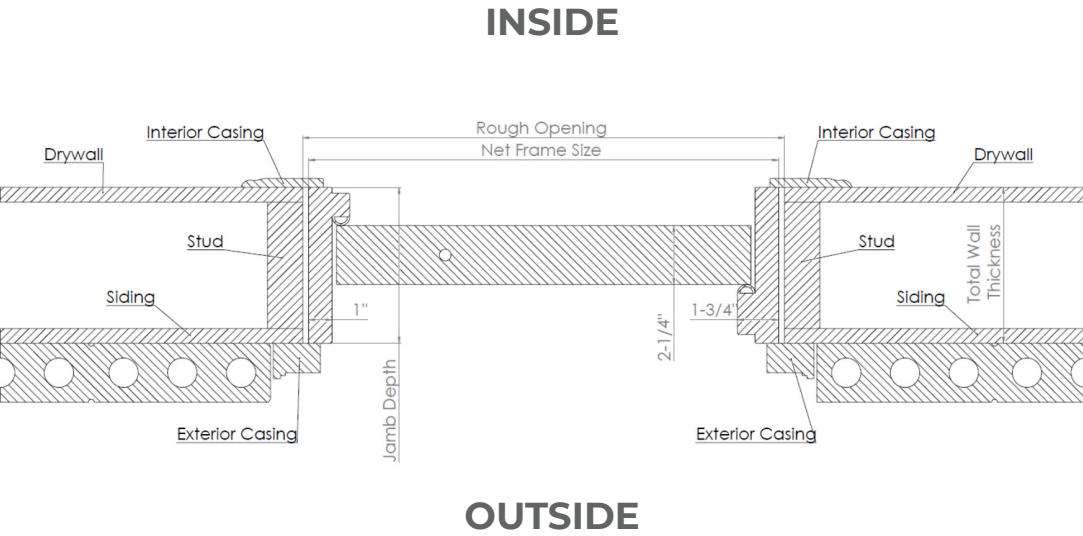
Smart Keypad Entryset

This entryset comes with the Empowered™ Touchscreen Keypad and is matched with Emtek's Baden entryset. This entryset would be an all in one choice of hardware for a more traditional look. Your choice of interior lever or knob and finish. Available finishes are Satin Nickel, Flat Black and Oil Rubbed Bronze.

Key Measurements

Door Size

When sizing the door you will need to consider two principle measurements, rough opening and frame size. See the image below for reference.



Rough Opening : The rough opening is the distance from stud to stud for framing purposes. We advise that you build a rough opening that is 1/2 in. wider and 1/2 in. taller than the total door unit. We find that this allows for sufficient shimming and adjustments during installation.

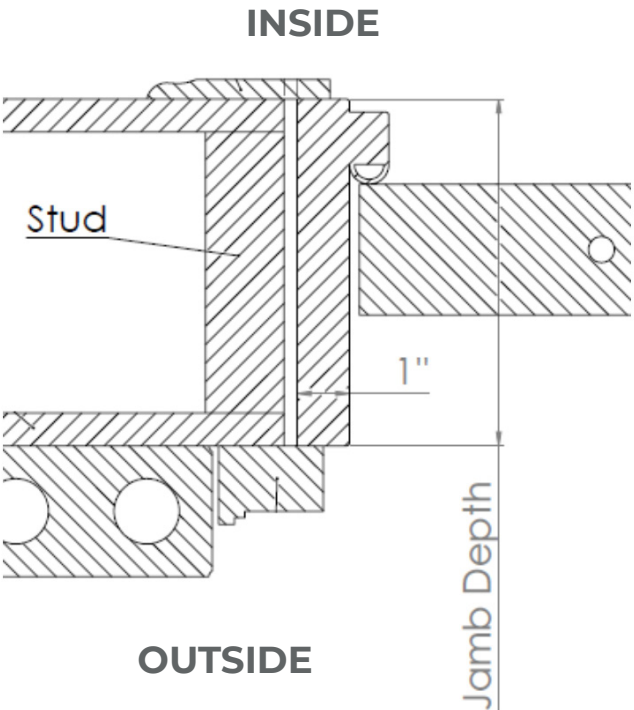
Net Frame Size : This is the size of the actual door jamb. When determining the net frame size you want to put in a number that is at least a half inch less than the rough opening size to allow room to square and level the door. For example, for a rough opening of 48 in. wide, order a net frame size of 47 1/2 in.

Jamb Measurements

One of the biggest considerations is jamb depth. Jamb depth depends on the thickness of the walls into which the door unit will be placed. Most walls are studded out with 2x4's or 2x6's, and so, our most common jamb depths are 4 5/8 in. and 6 5/8 in., respectively. Usually the jamb is flush with the interior and exterior wall covering, with the seam covered by casing.

We have standard jamb depths of

- 4 5/8 in.
- 5 1/4 in.
- 5 1/2 in.
- 6 5/8 in.
- 7 1/2 in.



If you wish for us to provide a jamb depth different from one of our standard options, please contact us.

Threshold

You have two variables to consider when setting up your threshold, color and type.

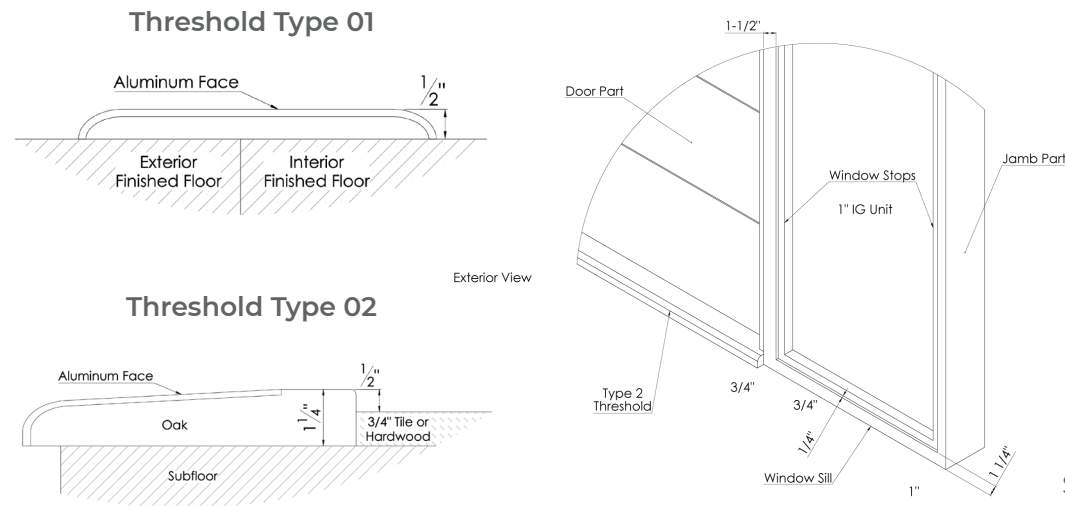
Threshold Color

The simplest variable to address is color: "Grey Aluminium" or "Black Anodized Aluminum"



Threshold Type

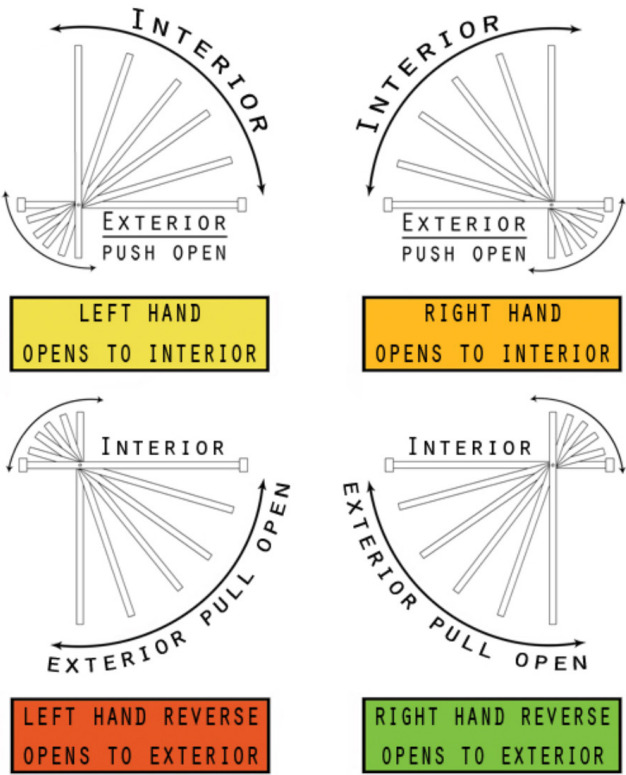
The Second variable is what type of threshold works for your project: Type 1 or Type 2



Swing

When you order your pivot-hung entryway, you have options when it comes to how the door will swing. Though 99% of the time, you will want a door that swings into the interior (in-swing), we are set up to build jams where the door swings out to the exterior (pushing your visitors out of the pathway of your tremendous door).

However, when it comes to right-hand or left-hand swing, the layout of your installation site will determine the swing configuration. To determine if the door is left-hand or right-hand in-swing, imagine you are looking at the door from the street. If the pivot point is on the left side, it is a left-hand in-swing. If the pivot point is on the right-hand side, the door is a right-hand in-swing.

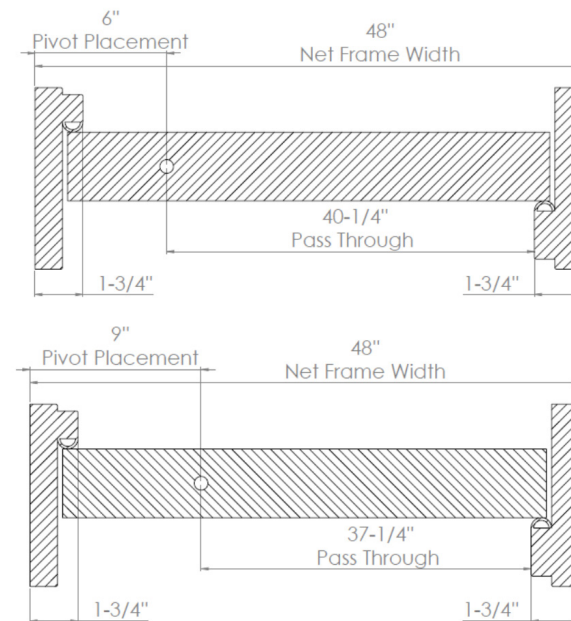


Swing configuration define the direction of door motion and from which side the pivot is placed.

Pivot Placement

The pivot placement is the distance the pivot pin will be placed away from the vertical edge of the rough opening. Generally speaking, we suggest placing the pivot over one quarter of the distance of the door width. We find that this presents a solid aesthetic for most door dimensions.

If your rough opening is 48" and you choose a 9" pivot placement, the door will roughly have a 37" pass-through opening. You want to ensure you leave at least a 36" opening. (Rough opening width - pivot placement measurement - 4 in. for jamb = a number greater than 36). See picture for details or contact us for clarification.



Crating & Shipping

Engineered Packaging

Upon completion, each door is wrapped in protective material and then placed in a crate that is custom built for the door dimensions and shipping parameters. We want the door to arrive in as beautiful a condition as when it leaves the shop.

Shop to Site Shipping

Every day we ship to cities all over the United States. Pivot Door Company maintains a good relationship with FedEx Freight® Services, the principal shipping company we use in delivering our doors from the shop to your installation site.

Curbside Delivery

Our standard shipment goes out by FedEx Freight® Curbside Delivery. This means a driver will arrive at the delivery site and will not assist in getting the door off of the truck or moving it up the driveway. It is best if you have 4-5 able-bodied individuals waiting to unload the crate off of the truck to help balance the crate as the driver lowers the crate with the lift-gate.





719 425 4289



contact@pivotdoorcompany.com



www.pivotdoorcompany.com



Monday - Friday, 08:00 AM - 04:00 PM MT