

Pivot Door Installation Quick Start Guide

To ensure a lifetime of dependable usage, follow these installation instructions precisely. **This abbreviated Quick Start Guide is for experienced door installers who only require details on the unique requirements of installing a pivot door. For complete installation instructions, consult the full guide and accompanying video at the QR code below.**

i COMPLETE INSTALLATION GUIDE AVAILABLE **i**

A complete, detailed installation guide with videos may be found here. Order number is required. (See packing list for order number.)



NOTE: Improper handling, installation or maintenance of the door may void its warranty. (UPDATE LAST PG)

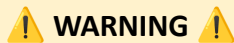
Quick Installation Steps:

- 1. General Factors to Consider** → Proper handling and storage.
- 2. Prepare Site and Door Unit** → Protect and finish the door prior to installation.
- 3. Crimp Breather Tubes** → See diagram.
- 4. Assemble Unit** → Using included diagram with labeled parts and numbered screwholes.
- 5. Position Jamb** → Determine your threshold: Type 1 or Type 2.
- 6. Place Door Slab** → Ensure proper assistance and use pencil marks to align pivots
- 7. Secure the Jamb** → Ensure door unit is square, plumb and level.
Ensure long pivot-anchoring screws are installed through top header into framing.
- 8. Install Sidelight / Transom Glass** → Ensure glass is installed using included diagram.
- 9. Finishing Touches** → Install door hardware.
- 10. Necessary Onsite Adjustments** → Top pivot and weather seals are adjustable.
- 11. Final Inspection Checklist** → Complete.
- 12. Troubleshooting** → Available at QR code above.

[Additional highlights to these steps are shown below.](#)

Section numbers below are not continuous and align to the corresponding sections in the full installation guide.

1. General Factors to Consider



WARNING



Please read these instructions carefully.

Improper handling, installation or maintenance of the door may void its warranty.

These instructions do not supersede local building codes and requirements.

The installer is responsible for the installation process, which includes final adjustment of the pivot hardware and weather seals.

Because it may take some work to achieve the best fit for the building, the jamb, and the door, be prepared to remove and stand the door, up to three times if necessary.

Proper Handling of the Door

Ensure that the door is not dropped, torqued, dragged, left exposed to bumps or strikes, not carried or lifted by fewer than four people. It is also important that the door is not exposed to the elements prior to being sealed.

Take measures to prevent damage to the threshold and floor during installation.

Jamb Must Be Assembled Onsite

Each pivot door unit is assembled in our shop and pivot hardware is factory calibrated. The jamb is then broken down for shipping. You will need to reassemble the jamb before installation.

2. Prepare Site and Door Unit

1. Prepare the site as you would for a standard door installation, with a framed rough opening that is ½” taller and ½” wider than the door unit ordered.
2. Keep in mind that as you move the door and jamb about for installation, you will want to be careful to not scratch or injure the door faces. Be sure to rest the door on protected surfaces only.
3. Carefully unpack and lay out the jamb pieces.
4. It is easiest to stain and finish the door and jamb at this point. *(See Care and Finishing Guide)*



2.1 Door Finish Requirements

The door unit must have several protective coats of sealer (e.g., spar urethane) applied at or before the time of installation in order to validate the warranty. Pivot Door Company does not provide finishing services. It is the responsibility of the customer to stain and seal the door.

We recommend that you work with a local professional (e.g., paint supply store or finishing contractor) to make decisions about what finish applications will work best for your project in your climate region and for your specific site conditions. (e.g., which way the door faces, how much sun it will get on a daily/seasonal basis, how much the ambient humidity will affect the longevity of the seal, etc.)

⚠ ATTENTION ⚠

Do not remove the pivot hardware for paint/staining.

Be sure to retain the jamb's kerf seals and the weather seal on top/bottom of the door. These are commonly misplaced at the finishing stage.

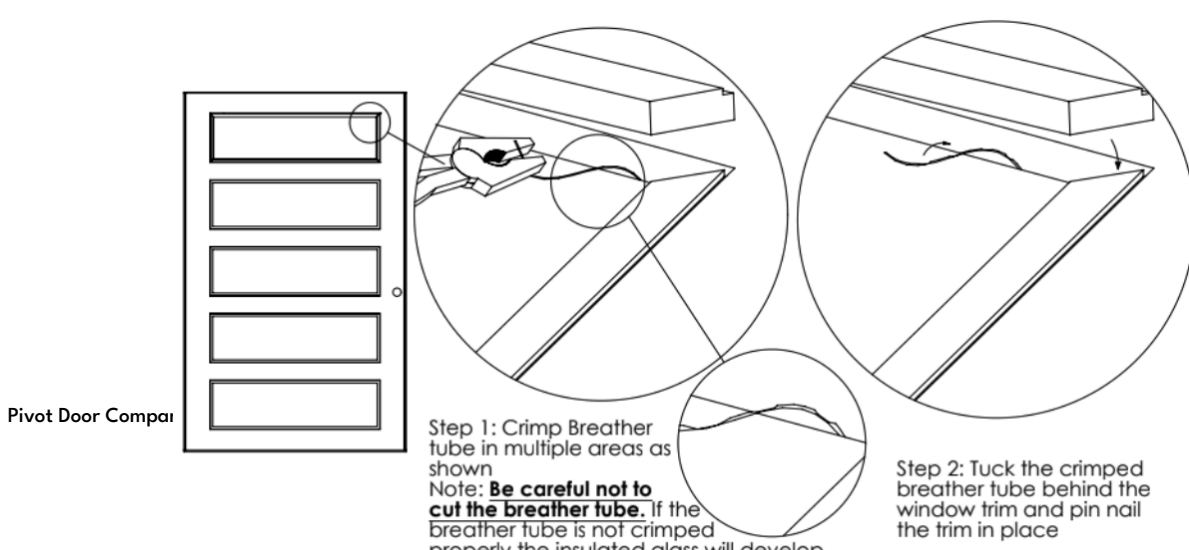
3. Crimp Breather Tubes

If your door includes glass, you will see a small wire poking out the side of each pane, held with blue tape. This is a breather tube to allow the window to pressurize properly as the glass changes altitude during shipping. If the breather tube is not closed the desiccant (drying agent) inside will deplete, causing moisture to build up on the inside of the glass panes.

Crimp the breather tubes closed as soon as possible! Tuck the crimped breather tube behind the window trim and pin nail the trim in place.

⚠ ATTENTION ⚠

If the breather tube is not crimped properly, the insulated glass will develop condensation inside.



4. Assemble Unit

1. Match numbered screwholes as shown in the included installation diagram (separate to this document).
2. Do not place glass into sidelights at this time.

5. Position Jamb

Doors may be manufactured with two types of thresholds. Type 1 rests on finished floors. Type 2 rests on subfloors. Your accompanying shop drawings will call out your threshold type. For complete guidance on differences in their jamb positions, see the complete install guide.

For type 2 thresholds, secure using 100% silicon sealant.

6. Place Door Slab

ATTENTION

Make sure to have adequate help to raise the door slab. They can weigh 300lb or more.

Because it may take some work to achieve the best fit for the house, the jamb, and the door, be prepared to remove and stand the door, up to three times if necessary.

1. Set the door slab onto the lower pivot hardware already in the threshold and position it within the jamb.
2. To place the door on the pivot, you will need two (2) or more laborers, depending on the size of the door.
3. It is useful to make a pencil mark on the interior face of the door indicating where the top and bottom pivots are centered for easy identification of these points during the positioning process.
4. Make sure that the top pivot hardware has been retracted fully into the header using the large flathead screw.
5. Ensure the top pivot pin is FULLY engaged in the pivot slot. Tighten the large flathead adjustment screw fully. When fully engaged, the adjustment screw will appear up to 1/8" recessed in the jamb hardware.



⚠ WARNING ⚠

Double check that the top pivot pin is fully lowered into the receiver pivot slot and the adjustment screw is fully engaged.

Failure to do so may result in door failure!

7. Secure the Jamb

1. Close the door and check the reveals around each edge to make sure it is even. **The door should sit evenly in the jamb, with 3/16" gaps on the sides and top and 3/8" gap on the bottom. The door should sit (inside to outside) 3/8" from the jamb door stop to the door slab with the kerf seal in between.**
2. Make adjustments to the shims as needed to ensure that the door swings smoothly and that the door and jamb are parallel and straight.
3. Secure the Jamb. We recommend a screw in the jamb posts every 2 feet behind the kerf seal. Reattach the kerf seal in the jamb side posts at this stage.
4. Secure the top pivot hardware. Remove the top pivot hardware cover plate, **remove two screws mounting the hardware to the jamb header and replace with 3" deck screws provided in the assembly pack.** This allows the pivot hardware to be secured not only to the jamb but directly to the building structure.

NOTE: This step does not apply if a transom window is built as a single unit with the door.

⚠ WARNING ⚠

Failure to properly secure the top pivot hardware to the structural framing can result in door failure.

8. Install Sidelight / Transom Glass

1. If your door configuration has a sidelight or transom, once the door and jamb have been installed, insert glass in the opening using a provided spacer block to hold it 1/8" off the edges.
2. While holding the glass centered in place, apply clear window caulking around the window to create an airtight waterproof seal. Add a small bead of clear silicone around the glass at the exterior. This is to prevent water and debris from getting in the area between the glass and wood trim.



9.3 Weather Seals

The top & bottom door seals are double rubber sweeps that are adjustable. Both top and bottom weather seals should be contacting the header and threshold by about 1/16".

10. Necessary Onsite Adjustments

⚠ ATTENTION ⚠

Do not make any adjustments to the pivot hardware in the threshold or jamb header.

If it becomes necessary to adjust the pivot hardware,
only make adjustments to the door slab hardware.

Because it may take some work to achieve the best fit for the house, the jamb, and the door, be prepared to remove and stand the door, up to three times if necessary.

10.3 Adjusting the Weather Seal

⚠ IMPORTANT ⚠

The top gap should not exceed 3/8". If it does, adjust the door ([section 10.1](#)) prior to any weather seal adjustments.

11. Final Installation Inspection Checklist

To complete the installation of your door, check gaps and seals. The door should sit evenly in the jamb with the side posts parallel to the door, with a top gap of 3/16" and 3/8" gap on the bottom. **Triple check that the top header pivot pin is fully lowered into the receiving top door pivot.** The door should sit (inside to outside) 3/8" from the jamb door stop to the door slab with the kerf seal in between. The kerf seals in the jamb side posts should be touching.



Final Inspection Checklist

- Top jamb pivot hardware properly mounted into framing header ([Section 7](#))
- Top jamb pivot fully seated down and secured in door pivot slot ([Section 6](#))
- Long fastener screws in 4 jamb corners and at latch ([Section 5](#))
- Kerf seals reinstalled ([Section 5](#) & [Section 7](#))
- Reveals, top and bottom, side and side are correct. ([Section 7](#))
- Top and bottom seals raised and/or lowered ([Section 10](#))
- Door finished with protective coats ([Section 2](#))
- Breather tubes crimped ([Section 3](#))
- Loose window trim on interior side of door nailed after breather tube crimp ([Section 3](#))
- Door and sidelight glass perimeter caulked ([Section 8](#))
- Sidelight window trim installed and brad nailed ([Section 8](#))
- No obstructions near top pivot, such as spray foam.
- Magnetic catch placement **before deadbolt latch plate** ([Section 9](#))
- Pull-handle installed ([Section 9](#))
- Deadbolt or lever installed with latch ([Section 9](#))



COMPLETE INSTALLATION GUIDE AVAILABLE



A complete, detailed installation guide with videos may be found here:

Improper handling, installation or maintenance of the door may void its warranty.

