

PIVOT

DOOR COMPANY

**THE WORLD'S BEST-BUILT
PIVOT DOORS**

www.pivotdoorcompany.com



TABLE OF CONTENTS



Introduction.....	2
Us vs. The Rest.....	3
Stuffed to the Jambs With Engineering.....	4
The Steel Core Difference.....	5
Discover our Doors.....	6
The Kogan.....	9
The Ogden.....	10
The Mehta.....	11
The Solace.....	12
The Dina.....	13
The Flat.....	14
The Dillon.....	15
The Park.....	16
The Lake.....	17
The Katti.....	18
The Line.....	19
The Monroe.....	20
The Robyn.....	21
The Pola.....	22
The Glass.....	23
The Sydney.....	24

The Hannah.....	25
The Lassen.....	26
The Finn.....	27
The Lora.....	28
The Eame.....	29
The Urban.....	30
The Double.....	31
Custom/Design Your Own.....	32
Pivot Wall System.....	33
Our Door Builder Tool.....	34
8 Steps To A Stunning New Entryway.....	35
Testimonials.....	36
Buying Guide.....	38
Wood & Hardware Options.....	39
We're Ready to Help.....	40

INTRODUCTION



For more than a decade, Pivot Door Company has been the go-to choice for top home builders, the most celebrated architects, and designers looking for something special for their projects. Why?

For one, our architectural door designs are carefully curated by our design team to complement the best homes being built today. Second, our proprietary steel core inside each door means that our doors will swing more freely, more easily, for more years to come—compared to any other pivot door manufactured in the world today. And, finally, we're trusted because of our team's careful attention to detail and commitment to deliver service that's on par with the design and engineering of our product.

In short, we build the world's best-built pivot doors. And we'd love to build one for you.



US VS. THE REST

FEATURE

PIVOT DOOR CO.

COMPETITORS' DOORS



Core Material



Proprietary Warp-Resistant Steel Core With Internal Thermal Protection



Laminate or Wood



Exterior Material



Solid High-End Hardwood Face Available On All Pivot Doors



Often Thin Wood Veneer



Durability



Warp-Resistant Steel Core Extends Life Of Your Pivot Door and Ensures A Tight Seal



Prone to Warping



Customization Options



Every Pivot Door Is Highly Customizable (Both Hardware And Design) & Made To Order



Limited Options



Installation



Pre-Assembly At Our Factory Makes Ours The Easiest Pivot Doors To Install (Typically 1–4 Hours)



Complex Installation



Climate Resilience



Steel Core Means Our Doors Work (No Sticking/Warping) Even In Hot/Humid/Cold Climates



Limited Climate Resistance



Longevity



Our Pivot Doors' Higher Resistance To Warping Mean They'll Last Longer Than Any Solid Wood Pivot Door



Shorter Lifespan



Warranty



2 Years—On ALL Our Designs & Sizes



Typically 1 Year



Lead Times



Typically 6–9 Weeks (Depending On The Season)



Typically 12–16 Weeks

STUFFED TO THE JAMBS WITH ENGINEERING

No pivot door on the planet has more engineering stuffed into it than ours.
If you're considering a door that isn't built around a steel core, consider this...

1.

High-end hardwood exteriors with a solid wood face offered in many design styles & wood varieties

2.

A 5-R insulating foam interior makes our doors energy efficient

3.

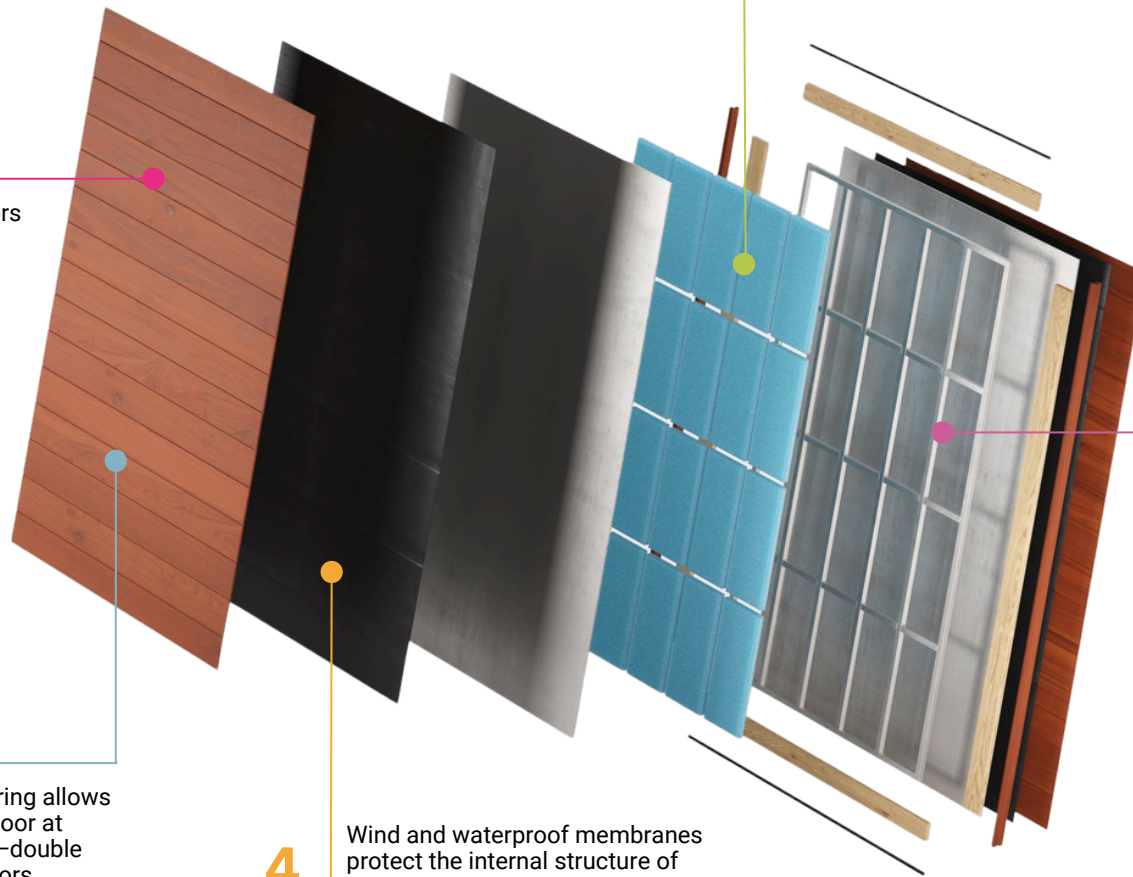
Our proprietary steel core frame gives each door a rigid, long-lasting structure for durability and strength against warping—key to our door's guaranteed performance

5.

This superior engineering allows us to warranty every door at every size for 2 years—double that of most competitors

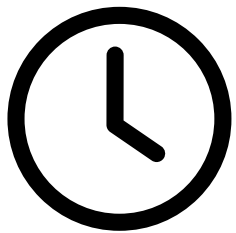
4.

Wind and waterproof membranes protect the internal structure of the door against the elements



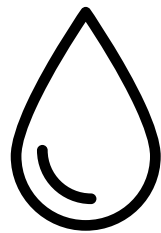
THE STEEL CORE DIFFERENCE

Every door we manufacture is built around a proprietary, patent-pending, welded steel core. We're the only builder to have solved the engineering challenge of building a door with the strength of steel and the beauty of the wood. And it makes all the difference.



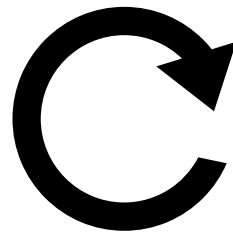
IMPROVED LONGEVITY

Our steel core means our doors last years longer than solid wood or composite doors.



GOOD IN ALL CLIMATES

This engineering means our doors withstand the elements better and are suitable in any climate.



BETTER PERFORMANCE

They will swing more effortlessly for years to come and resist warping and sagging.



TWO-YEAR WARRANTY

Superior construction allows us to warranty our doors twice as long as most.



MOST-TRUSTED SUPPLIER

World-class design & engineering make us the preferred supplier for top builders

DISCOVER OUR DOORS



The Kogan
Pivot Door



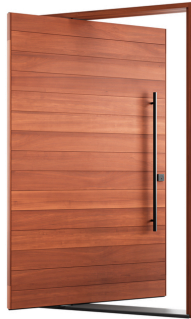
The Ogden
Pivot Door



The Mehta
Pivot Door



The Solace
Pivot Door



The Dina
Pivot Door



The Flat
Pivot Door



The Dillon
Pivot Door



The Park
Pivot Door



The Lake
Pivot Door



The Katti
Pivot Door



The Line
Pivot Door



The Monroe
Pivot Door

DISCOVER OUR DOORS



The Robyn
Pivot Door



The Pola
Pivot Door



The Glass
Pivot Door



The Sydney
Pivot Door



The Hannah
Pivot Door



The Lassen
Pivot Door



The Finn
Pivot Door



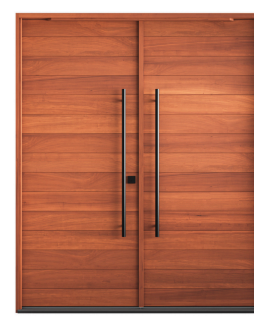
The Lora
Pivot Door



The Eame
Pivot Door



The Urban
Pivot Door



The Double
Pivot Door



Your Custom
Pivot Door

A DOOR FOR EVERY STYLE



No matter the style of your home, we have a door that's perfect.

Here, you'll find all of our door designs that have been created and curated just for you. And if you don't see the door of your dreams, reach out to our design team. We're building something custom for someone just about every day.



THE KOGAN



The Kogan Pivot Door offers a unique design with custom wood handle, which is why so many of our clients love it.

With its standout design and light-loving glass, it's perfect for modern homes or entrances with great views. The paint grade option is best for the black steel look.



THE OGDEN



The Ogden Pivot Door is our Lassen style, but with four evenly spaced windows.

The perfect symmetry of the door's windows, paired with the sidelight dividers, creates a juxtaposition of light and shadow, making it a beautiful addition to most architectural styles.



THE MEHTA



The integrated vertical steel pull handle of the Mehta Pivot Door modernizes any entryway.

The strong and heavy presence of the design complements contemporary, industrial, or modern homes and entryways that want to make a bold statement.

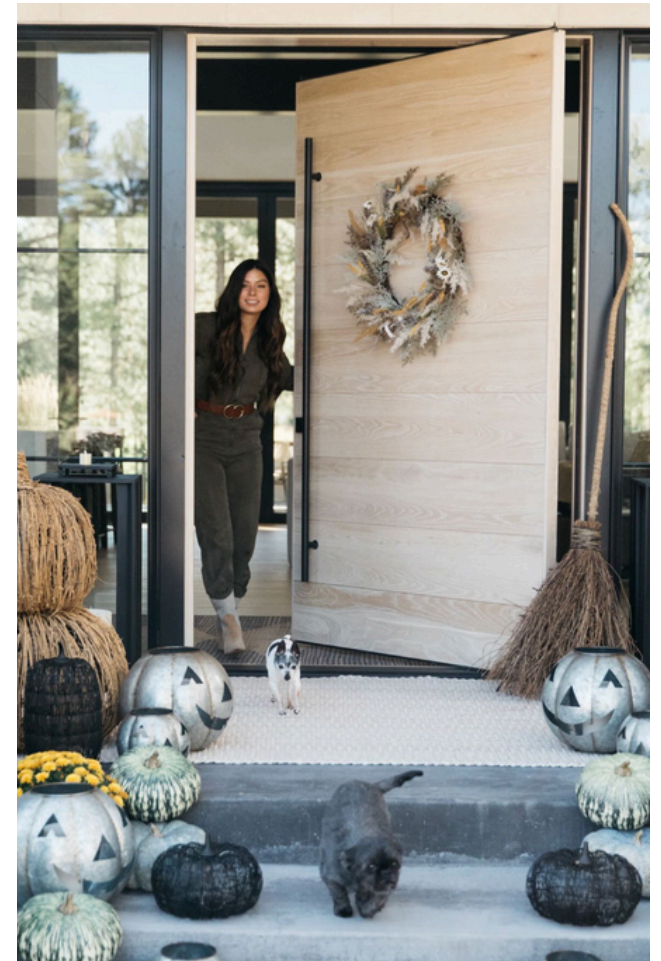
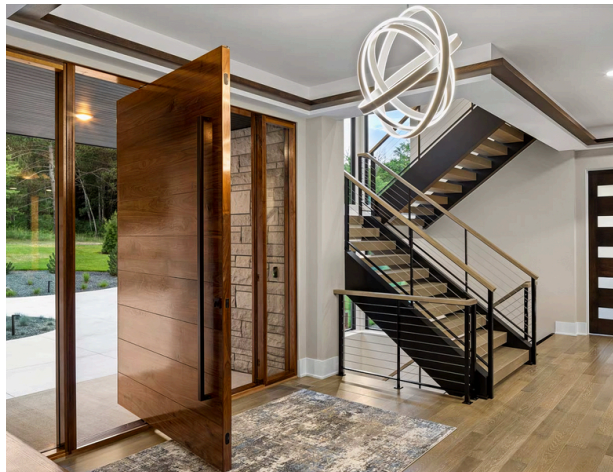


THE SOLACE



The clean, modern lines of the Solace Pivot Door make it one of our most versatile designs—elevating the entrance to homes of just about any style.

Works well for a house with busy textures and lots of windows, while allowing for privacy.

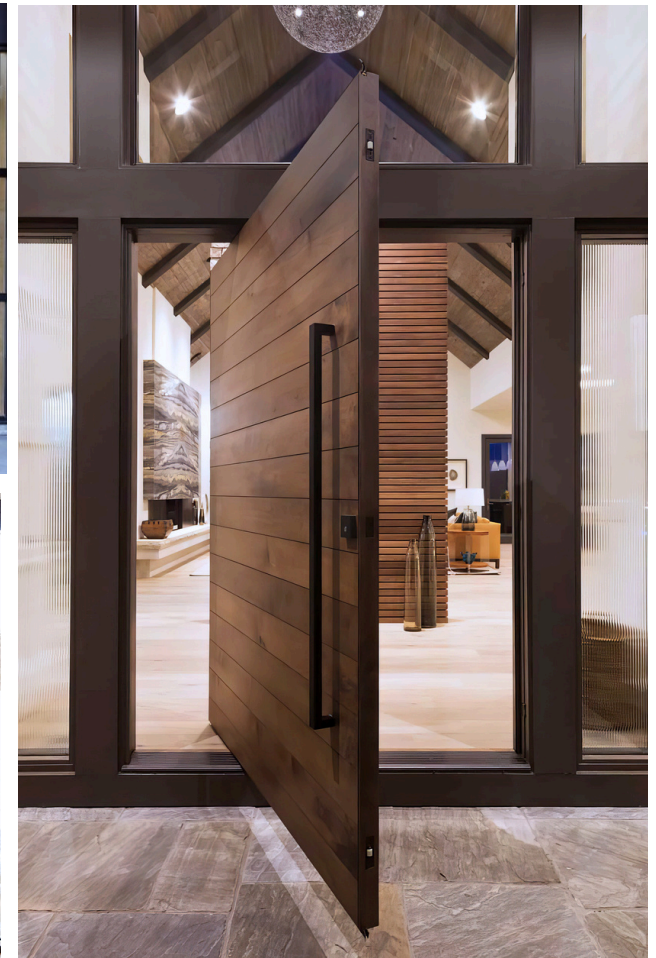
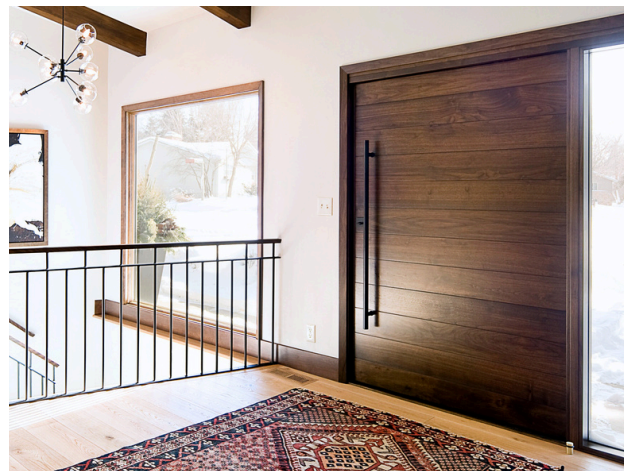


THE DINA



The elegant tongue and groove panels of the Dina Pivot Door pair well with homes of any style.

This door carries a heavier horizontal aesthetic, because the reveals are closer together.



THE FLAT



The Flat Pivot Door is simple—designed to disappear into the house's facade.

Conversely, this door can be painted a bright color for a pop. The design is clean, sophisticated, and pairs perfectly with an iconic pull.

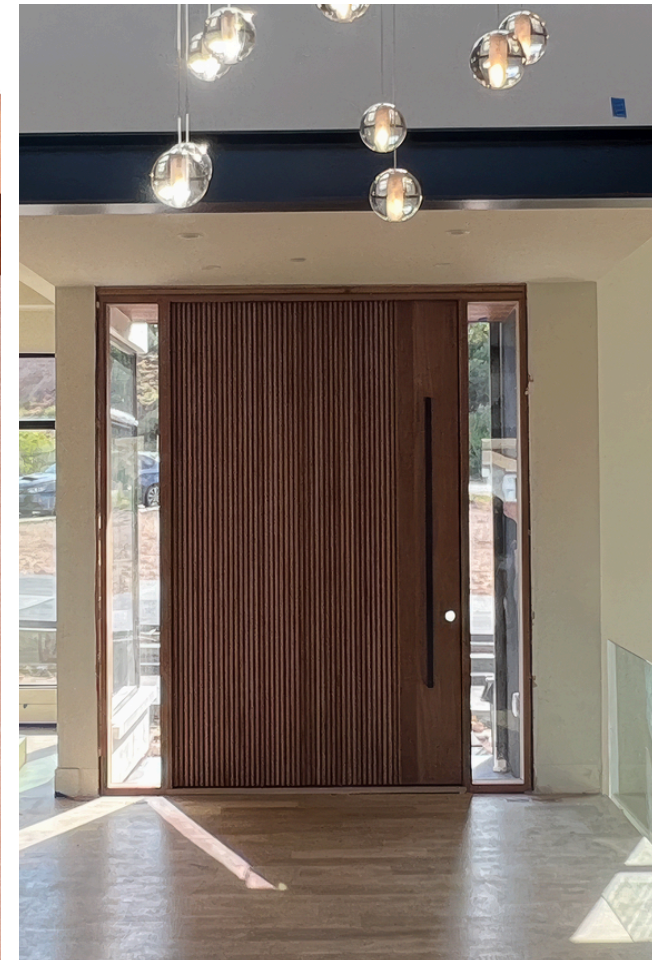


THE DILLON



The Dillon Pivot Door—our most time-consuming, craft-intensive door—is unforgettable for its details.

The clean modern lines of the design, combined with quality craftsmanship, ensure this door is a statement piece. If you're looking for something special, consider the Dillon.

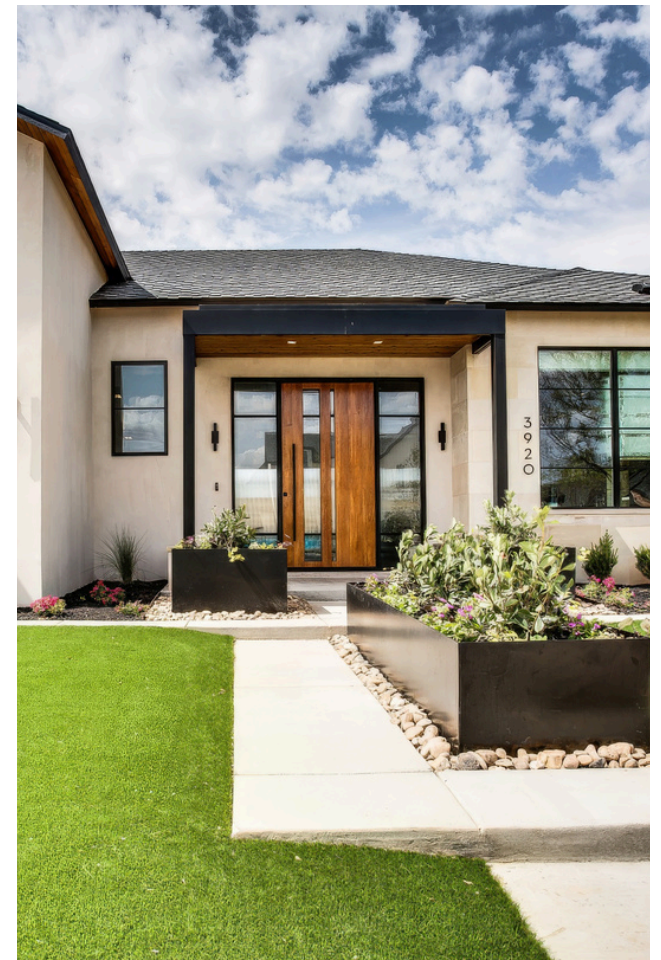


THE PARK



The windows of the Park Pivot Door add contrast—allowing for light and sight without a sidelight option.

If you own a modern, vintage, or contemporary home, this door will nicely complement your home's style.

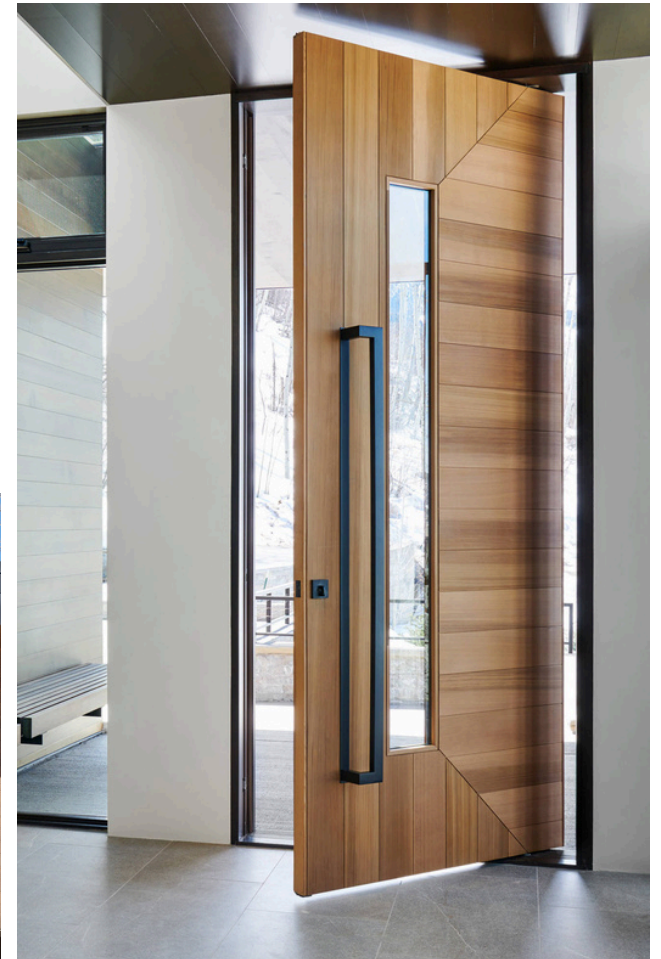


THE LAKE



Horizontal planks intersecting elegantly with vertical planks and a window make the Lake Pivot Door a piece of art.

The tongue-and-groove woodwork and inset window make it a captivating entrance for a craftsman-style home—though it works well with most styles.



THE KATTI



The Katti Pivot Door is similar to the Dina with the addition of a window—bringing light and a view to your entrance.

The simple, clean design has a horizontal presence and pairs well with modern and contemporary homes.

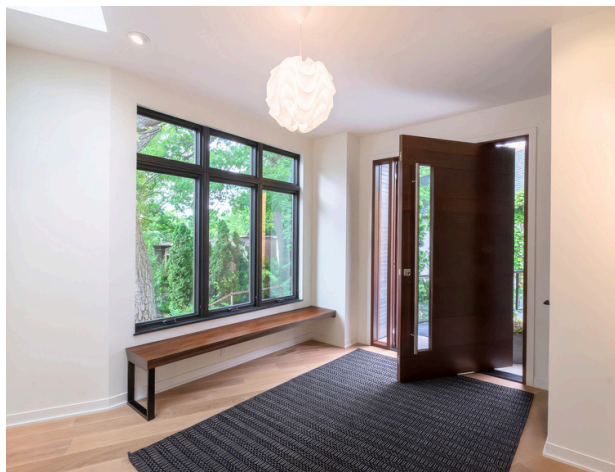


THE LINE



The Line Pivot Door takes the clean, modern lines of the Solace and adds a window.

This door can help balance an asymmetrical house and pairs well with modern and contemporary homes due to the off-centered window placement.



THE MONROE

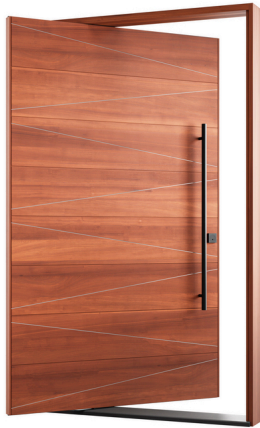


The craftsman design—contrasted with a modern pivot system—make the Monroe Pivot Door a top choice for homeowners and designers.

The two symmetrical windows allow for both privacy and light into the entryway space. This door design works well with modern farmhouse or Tudor homes.



THE ROBYN



The Robyn Pivot Door's angular lines create contrast with the wood grain for an eye-catching array of textures.

This door allows for 6" or 12" planks, as well as metal inlays which add depth and dimension to an already stunning door. Complements wide homes and wide entryways.



THE POLA



Simple vertical plank placement of our high-end wood gives the Pola Pivot Door its traditional, but timeless appearance.

It's a customer favorite that works well with any home. Great for a modern farmhouse.



THE GLASS



If you love light (or have a great view out of your front entrance), you'll love our Glass Pivot Door.

It's simple, timeless, and brings the outside inside.



THE SYDNEY



With large, vertically-stacked glass panes, the Sydney Pivot Door is ideal for bringing light into your entrance.

Its modern design makes it an ideal choice for all but more traditional home designs. This design is great for harsh climates.



THE HANNAH



The Hannah Pivot Door's timeless looks and versatility make it one of our most popular designs.

The symmetry of alternating wood and glass panels balance the amount of light in your entryway. Pairs well with all styles of homes.

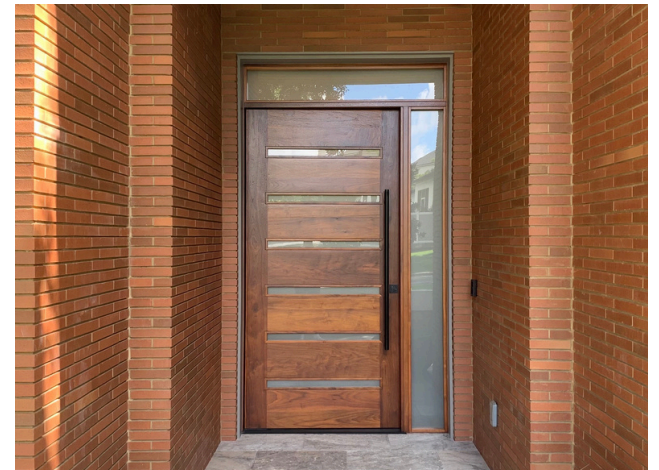
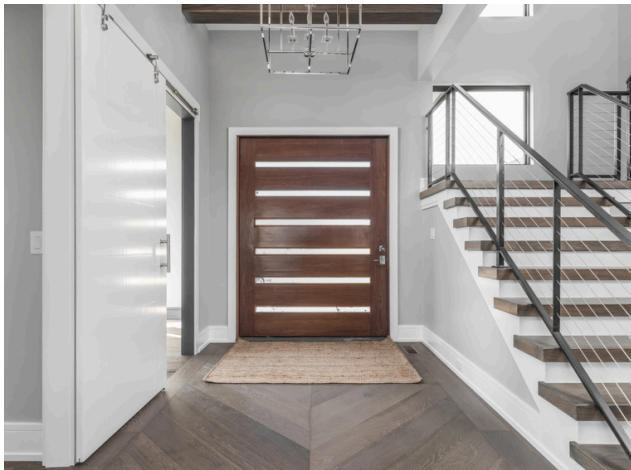


THE LASSEN



The versatility of Lassen Pivot Door makes a bold statement with the natural elements of the wood and splashes of light, making it a top choice for home builders.

The thin window frames are designed for privacy but allow for dynamic light to brighten any entryway.



THE FINN



The asymmetrical nature of the Finn Pivot Door brings balance to any home.

The vertical and horizontal planks create flow with the eye. It's an excellent choice for a modern or contemporary-style home and those who love privacy.

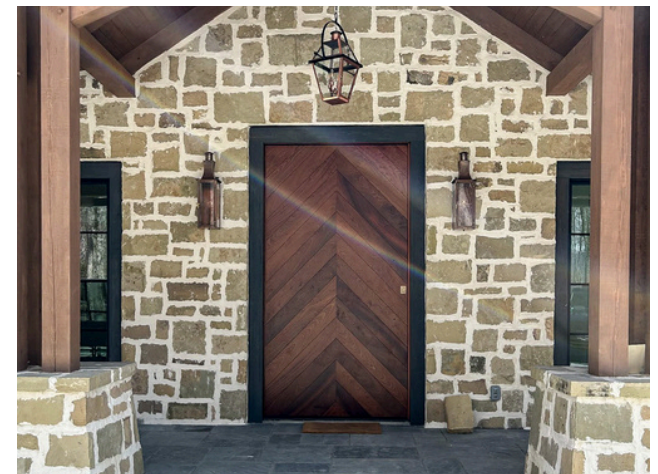


THE LORA



The Lora is for the owner who appreciates beautiful woodwork. The angular chevron shape pointing skyward is as attention-grabbing as it is classy. Additionally, it ties in with surrounding nature—a nice touch for homes in picturesque places.

It's also a great choice for more traditional-, ranch-, or even Tudor-style homes.



THE EAME



The square windows nestled in this door's design create a heavy horizontal texture—making the Eame one of our most distinctive entrances.

The small windows balance the largeness of the pivot door on smaller houses and complement mid-century modern homes.



THE URBAN



Perhaps our “most copied” design, the Urban offers a look that’s become sought-after by high-end homebuilders everywhere.

We recommend it without any caveats. It’s symmetrical application also works well with a transom.

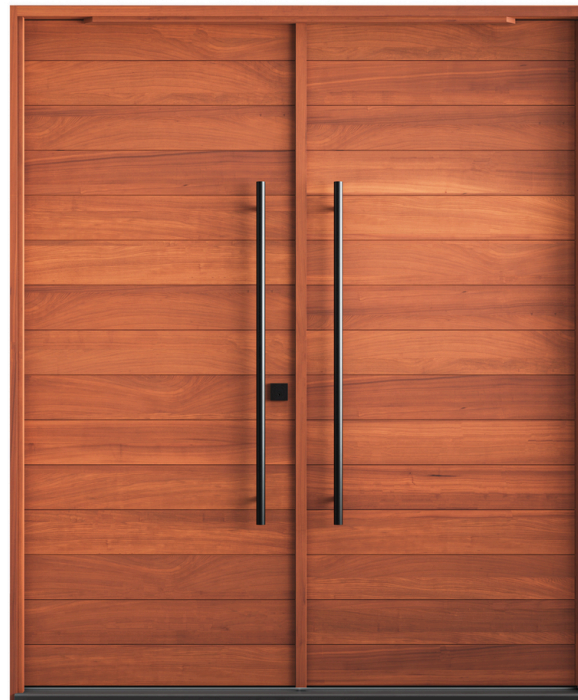


THE DOUBLE PIVOT DOOR



This configuration pairs two of any door style inside of a single entrance unit, with each door operating independently.

It makes for a particularly grand entrance.



YOUR CUSTOM DESIGN



Don't see what you're looking for? Hardly a day passes that we aren't building a custom door for a customer. Reach out to our design team, and they'll help you bring the door of your dreams to life.

Finally, we offer a faceless door option, upon which you can apply your own design after delivery.



PIVOT WALL SYSTEM



If you're looking to design a room that can open larger or be divided into smaller space, consider our stunning Pivot Wall System. Our wall systems use the same superior internals as our doors, allowing you to radically transform a space within minutes.



OUR ADVANCED, NEW DOOR BUILDER TOOL



Having trouble deciding which door is perfect for your home? Well, we're here to help.

Our advanced, new door builder tool allows you to upload a picture of your home to our website, then try on each and every door in our catalog until you find the one that's right.

1.

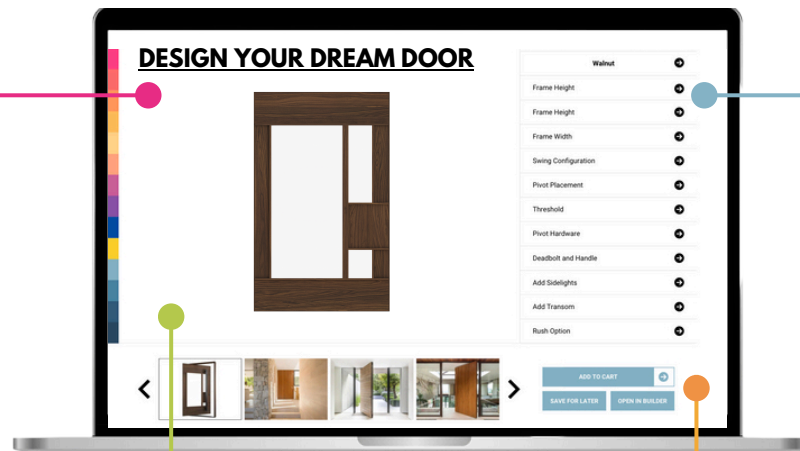
UPLOAD A PICTURE OF YOUR HOME

Our real-time builder allows you to upload a photo of your home to see how our doors work with your exact home.

2.

TRY ON DIFFERENT DOOR DESIGNS

Every single model is available in our door builder tool so you can shop the entire catalog and see which design is right for your project.



3.

EXPLORE DIFFERENT FINISHES

Once you've chosen a design that you love, you can even change the wood finishes to see which wood type is your favorite.

4.

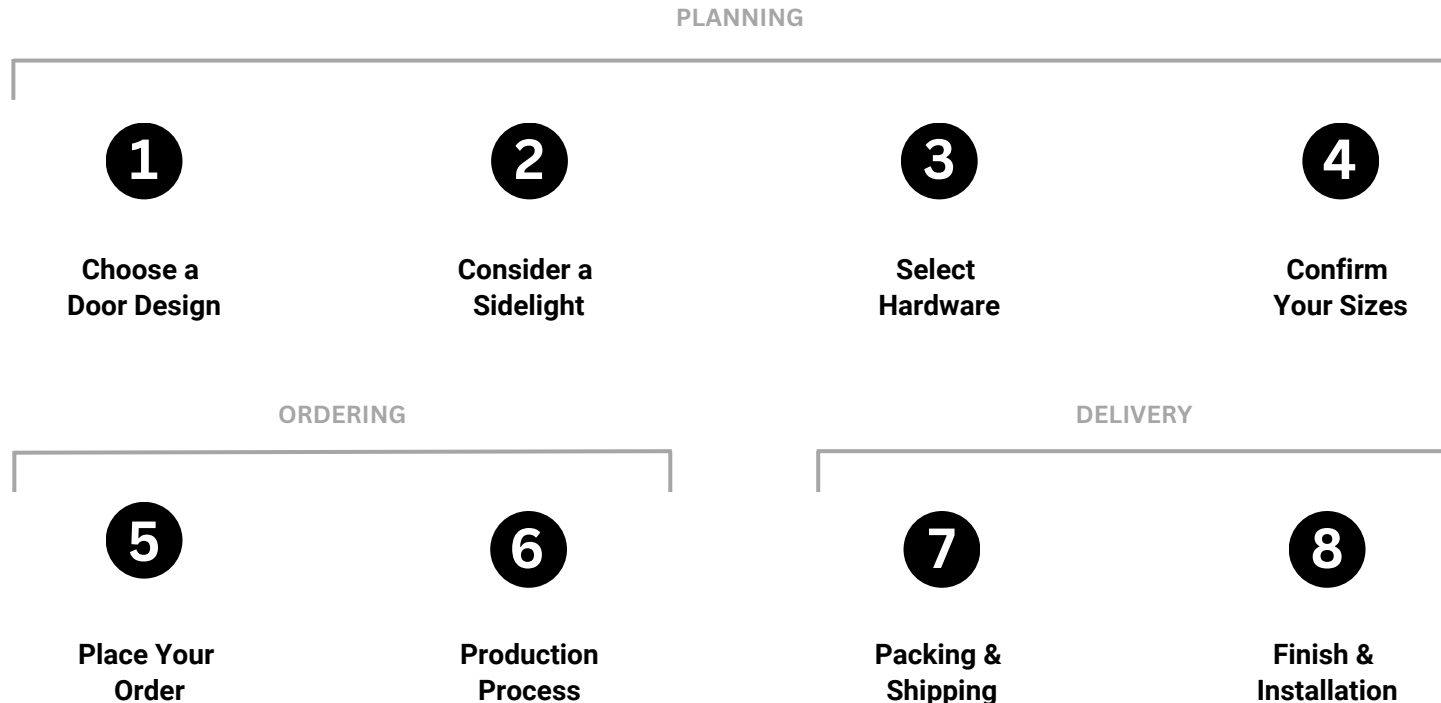
ORDER YOUR DOOR RIGHT FROM THE SITE

Once you've chosen a door style, and a wood finish, you can enter the specs for your entryway and order right from the site. Of course, our sales team is available by phone too.

8 STEPS TO A STUNNING NEW ENTRYWAY



Our entire buying process is made simple and seamless.



[GO TO BUYING GUIDE](#)



TESTIMONIALS



We are very happy—extremely happy—with our pivot door and the service we received from John and Candice. This was our “splurge” because we knew what a strong statement a beautiful entry door makes on entering a home. Thanks so much!

—**Nadia Eftedal**
Customer



Pivot Door Company is our new go-to for our clients’ pivot door needs. We are a design-build firm in Northern California, and we spec out several of these annually. We are very impressed and satisfied with the superior product, friendly customer service, and efficiency of the entire company.

—**June Johnstone**
Design-Build Firm



When planning my new build, choosing a pivot door from The Pivot Door Company was a no-brainer. Their reputation for quality precedes them, and I can confidently say you won’t be disappointed. John and his team were invaluable throughout the process, offering expert advice on sizing, wood species, and aesthetics. Upon receiving the door, I encountered a minor setback when none of my builder’s contractors were willing to install it due to lack of experience. Undeterred, I took matters into my own hands and decided to install it myself—despite being a homeowner with no prior door installation or wood-working experience. Thanks to the thorough instructions provided by The Pivot Door Company, as well as some assistance from friends, I successfully installed my impressive 9’ x 5’ pivot door in just one day! Would I tackle it again? Absolutely! The door is not just a functional entryway; it’s a statement piece that draws compliments and serves as the centerpiece of my home. Every time I use it, I’m reminded of the satisfaction of overcoming a challenge and the beauty of a well-crafted product. After all, I am most proud that was able to roll up my sleeves and showcase that anyone can do it, even first time installers!

—**Saif Qutub**
Customer



Pivot Door Company was quality and professional! My clients love the product and operations! I will be back! Great job!!

—**Steve Sadler**
Contractor



The door install process was a breeze. I’ve installed other pivot doors and they were a nightmare. We had the jamb built and door hung in 45 mins. I told my guys before hand be prepared we are going to have a long day. I personally think it was easier than hanging a set of French doors.

—**Frankie Gauthier**
Developer

TESTIMONIALS



For our recently constructed dream house, we wanted the front door to create a "Wow" statement in terms of its overall aesthetics, durability, and construction integrity. After a thorough and widespread search, we found the perfect match at Pivot Door. In addition to a great product selection, Pivot Door's sales and technical folks provided exemplary service.

—Samir Belyamani
Customer



This stunning door is the "Pivotal" piece that leaves potential buyers with an expectation of what lies beyond the entry. It is the WOW factor that leaves a great impression on passersby and visitors alike. I would absolutely recommend this product and this company to anyone.

—Kellie Davis
Customer



We absolutely love our pivot door! It arrived extremely well-packaged; instructions are very detailed to get the best installation and performance out of the door as possible. The install was not difficult at all. It is a heavy door but that is the point! I constantly receive compliments on my door. I think it is the perfect finishing touch to the house, and it's also quite superior in function to conventional doors. After-sales support is awesome. Beverly and Candice always answer emails and do the utmost to support their customers. I highly recommend The Pivot Door Company!

—Rick Giesen
Customer



Our job site had some pretty daunting weather conditions, which made finding the right doors a bit of a challenge. I had previously worked with another company whose door warped and failed after just a few months. This time, their steel core construction offered by this company provided far greater stability, crucial for the varying temperatures and harsh conditions at my site. John and his team proactively helped us customize the doors to not only meet but exceed the challenges we were facing.

—Sungjoon Choi
Homeowner



This company has both incredible service and products! Plus, their communication was excellent. Just finished this custom home and they were one of the best suppliers. We will use them again.

—Tom
Builder



We typically use custom door companies that are 2x the cost, and I was concerned at first of the concept of "you get what you pay for." There was no reason for concern, because the customer service and product itself was better than the typical custom doors we buy. This is my new favorite product/company

—Scott Cross
Builder

BUYING GUIDE



Order By Phone or Online

All of our prices are available immediately online. Instead of making customers wait for someone to call them back—or only showing a vast price range—we give our customers the freedom to play around with their door configuration, all while seeing live pricing.

While other manufacturers may not choose to share their prices online, we believe it makes the customer experience easier, it allows you to shop more confidently, and it makes clear the tremendous value of getting a steel-core pivot door at prices on par with those that aren't built with this critical engineering inside.

Your total cost includes door unit, sidelights (if added), any hardware added, your local taxes, and flat fee shipping to the 48 states.

Timelines & Process

Every door is manufactured in our world-class facility in Colorado and takes 6-9 weeks from order to shipment in the lower 48. (Please call for more up-to-date delivery times for AK, HI, and international.)

After your order is placed, our sales team will reach out to confirm your specs. Once your door is built, shipping information will be sent out so you can track your shipment and plan for installation.

Every door is pre-assembled in our factory to guarantee fit and quality. Then, we disassemble the door and prep it for shipping. Each door is designed for easy for installation by your contractor and 4–5 helpers, depending on the size of the door. Our unique build process, pre-assembly, and packaging are a few of the reasons our doors are recognized by contractors as one of the easiest to install.

What's Included

Our doors are 2 ¼" thick, with a double steel-reinforced core. The core is packed with 1" foam insulation for a total R-value of 7. Purchase price includes the door slab, threshold, preinstalled pivot hardware and jamb assembly. Some door styles will include a custom handle or a casing package. Sidelights can be added onto your door unit too.

Shipping

Our standard shipment goes by ground to both residential and commercial addresses and typically costs \$649. The shipping company driver will not assist in getting the door off of the truck or moving it up the driveway. Have 4-5 able-bodied individuals waiting to unload the crate and to help balance it as the driver lowers the lift-gate.



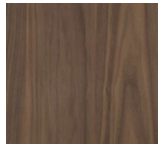
WOOD & HARDWARE OPTIONS



These are our most common options, but we can also source any other combination of wood or glass or handle that you are looking for to build the perfect door.



Mahogany/
Sapele



Walnut



White
Oak



Premium
Alder



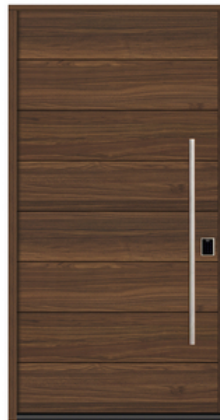
Cedar



Paint
Grade



Wood Type: Premium Alder
Handle: 6ft. Modern Bar 3301
Lock: Square Deadbolt
Prep Type: Single Bore



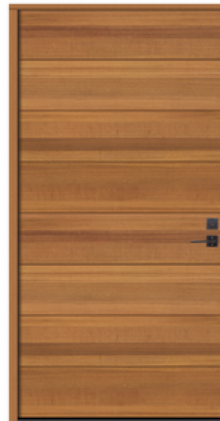
Wood Type: Walnut
Handle: 4ft. Modern Bar 3301
Lock: Smart Touchscreen
Keypad
Prep Type: Single Bore



Wood Type: Mahogany
Handle: Baden Entryset
Lock: Smart Touchscreen
Keypad
Prep Type: Double Bore



Wood Type: White Oak
Handle & Lockset: Emtek
Mormont Mortise
Prep Type: Mortise



Wood Type: Cedar
Handle: Emtek Helios Lever
Lock: Emtek Square Deadbolt
Prep Type: Double Bore



Wood Type: Walnut
Handle: 3ft. Modern Bar 3301
Lock: Emtek Modern Disc
Deadbolt

WE'RE READY TO HELP



If we can help you with your project, please reach out.

By phone:

719.425.4289

M–F 8am–4pm MST

Or by email:

contact@pivotdoorcompany.com

And here's our address:

1260 Valley Street

Colorado Springs, CO 80915

USA




We'd love to help.







At Pivot Door Company, we build the most stunning doors for the most stunning homes. Our industry-leading engineering and superior craftsmanship are the reason we are trusted by the world's most sought-after builders and designers. Use our builder tool to explore how our architecturally-inspired designs will look on your home. And if you don't see your dream door in our catalog, give us a call. Our design team is ready to help you build a bespoke door to help you bring your vision to life.

 facebook.com/pivotdoor
 [@pivotdoor](https://www.instagram.com/pivotdoor)
 [@pivotdoorcompany](https://www.pinterest.com/pivotdoor)
719.425.4289
www.pivotdoorcompany.com